

PLATFORM SUMMARY

O2C PRO



Webcollect

MODULAR DESIGN

COLLECTIONS

Transforms and simplifies the process of collecting receivables using Artificial Intelligence and Machine Learning algorithms. Drives payments faster and minimizes manual intervention through the use of automated account follow-up and strategic activities, freeing the collectors to focus on accounts that need attention.

DISPUTE MANAGEMENT

Manages the full life-cycle of a dispute or deduction via automated escalation to appropriate parties to reach resolution. Root cause analysis and cycle times of disputes/deductions. Visibility of the dispute is available across the organization and not just limited to a single team.

CREDIT & RISK MANAGEMENT

Automates the handling of accounts to establish terms, credit limits and assign appropriate treatment to those needing more attention based on their risk score. Direct interaction with credit bureau agencies automates the credit approval process.

CASH APPLICATIONS

Interacts with Customer ERPs to allow application, reassignment of payments, request write-offs, credits and balance adjustments. Provides users the ability to process payments via ACH or credit card and seamlessly integrate payments processed with ERPs. Customers can process payments directly in Webcollect's Customer Portal.

REPORTING

The Report Builder module allows a powerful but simple approach to creating and executing detailed and summary reports that can be delivered as PDF, Excel, CSV and XML. All data contained in Webcollect is reportable with a wide range of scheduling options and can be delivered real time, via email, or secure ftp.

CUSTOMER PORTAL

Webcollect's Customer Portal provides customers a secure, advanced and easy to use online platform for managing invoices and payments. Customers can view or download invoice copies or pull a Statement of Account and also have the option to dispute an invoice.

KEY FEATURES

- **Predictive Metrics**
 - **Automation**
 - **Artificial Intelligence**
 - **Machine Learning**
 - **Global Consolidation**
 - **Audit & Analytics**
- Intuitive user interfaces, more information presented to the user with scalable screen content, real time metrics with drill down capability
 - Integrated email management within Webcollect for greater visibility of customer communication including task routing based on Artificial Intelligence and Machine Learning
 - Manages credit and customer financial data to maximize collections and reduce dispute resolution times
 - Webcollect's strategy engine supports the scheduling of automatic customer notifications in the language of preference
 - Increased productivity and efficiency with predictive analytics
 - Share workload and manage segments of credit, collections and cash applications at various global locations
 - Customizable AR dashboard with ability to review key metrics like Aging, Task Management, User Activity, Automation Statistics, and Target vs Goal management
 - Global collaboration is supported by integrating multi language capabilities and currency conversions
 - Supports large data volume requirements with an easily scalable architecture
 - Data is seamlessly exchanged between the customer's ERP and Webcollect. Options include batch transfers using SFTP or real time via APIs

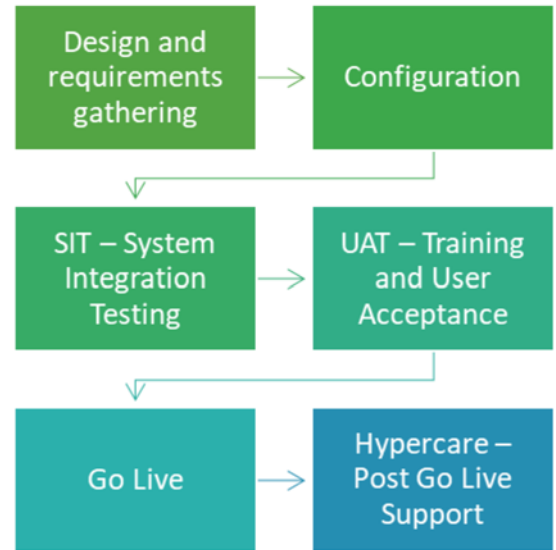
L I C E N S I N G

SOFTWARE LICENSE

Webcollect is offered as a subscription-based service or can be licensed perpetually on a per user basis.

SOFTWARE IMPLEMENTATION

O2C Pro prefers Agile Methodology, which is an incremental, repetitive means of managing projects, particularly in software development and implementation. O2C Pro involves the project team early on and ensures we maintain constant communication and closely collaborate every step of the way to achieve the desired results. Our project methodology includes the following phases:



USER INTERFACE

USER INTERFACE LOOK AND FEEL

Webcollect's User Interface was designed to provide an easy to use and intuitive environment that makes it simple to interact with the tool and complete tasks efficiently with as few clicks as possible.

VENDOR EXPERTISE

Webcollect was designed by accounts receivables and credit experts who found gaps in existing market tools available. In order to bridge these gaps, O2C Pro has created a platform that has decades of combined industry experience and merged these components into a modular, easy-to-use order to cash platform. Our implementation and support team is made up of experts and practitioners with years of industry knowledge.

Domain Expertise

Delivery

Finance Transformation

Customer Relationship Excellence

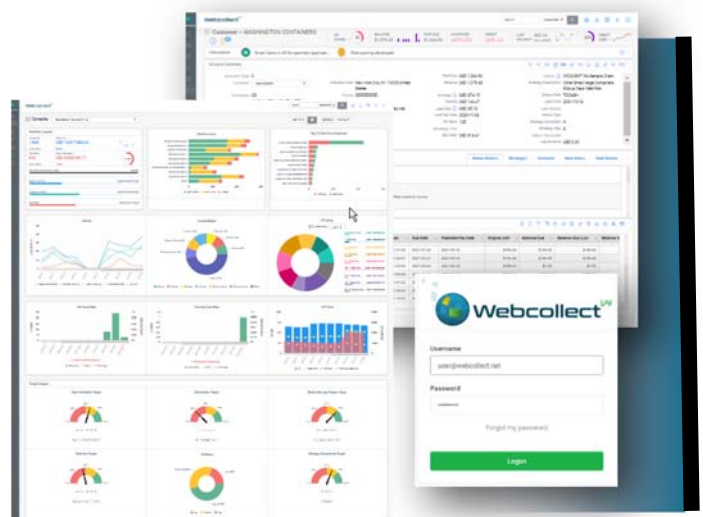
EASE OF USE

The Webcollect platform is easy to learn and master with standardized interfaces and point and click navigation.

Users become proficient with minimal training. The system can be accessed from any internet connected computer, tablet or phone and supports all leading web browsers.

SOFTWARE FLEXIBILITY

Webcollect has been designed with flexibility in mind. The tool has over 1,000 configurable parameters that can be managed by administrators. Role based ACL's ensure appropriate access based on job function and business area. Many features can be tailored by team leads and super users while enforcing proper control and audit trail.



DATA MANAGEMENT

LIVE DATA STREAM

Webcollect can exchange live data in real time with the desired customer ERPs utilizing web services using the XML, SOAP, WSDL and UDDI open standards over an Internet protocol backbone. Webcollect also supports Web APIs (REST based communication). Restful APIs will not require XML-based Web service protocols (SOAP and WSDL) to support their interfaces.

INTEGRATION WITH OTHER SOFTWARE PRODUCTS OR PROCESSES

Due to the web based, multi-tier architecture of Webcollect, it is capable of easily integrating with 3rd party software products used by our customers.

ARCHIVAL

Webcollect provides automated archival capability that includes the removal of older records no longer needed in daily processes. All archived records are stored in the database in specially designated "inactive data" tables and are available for easy access and reporting.



SUPPORT

SUPPORT HOURS

24/7

TRANSPARENCY

Our company is built on long-term partnerships, which means that we want to earn your trust and keep it. We do this through our commitment to absolute transparency about us, or processes, and our work and your project.

Enterprise Class

Modular

Scalable

Secure

ABOUT US

LOCATIONS

USA

2211 Fruitville Road Sarasota, FL 34237

6278 N Federal Hwy, Suite 567 Fort Lauderdale, FL 33308

INDIA

157, Developed Plot, Perungudi Electronic Estate, Chennai - 600 096



For General Inquiries or to schedule a demo

Phone: +1 954.903.7500

Email: info@o2cpro.com

Website:

<https://o2cpro.com>